

WHO



1. Individuals who have engaged in **risky sexual behavior in the past year.**
2. Those who have had **sexually transmitted diseases.**
3. Individuals who have a **sexual partner with any of the above risks.**

WHY




**Getting two doses provides 90% protection** against Mpox and helps protect you and people who come into close contact with you.






HOW



You can make an **appointment directly with the hospital** to get vaccinated.



# Get vaccinated for Mpox!



# Mpox Alert:

## Here's What You Should Do



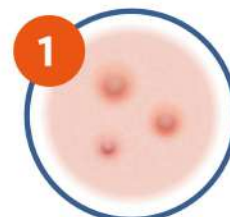
There have been cases of Mpox reported in Taiwan. If you're planning to travel to areas where Mpox virus is transmitting or high-risk premises venues, avoid close contact with unknown people.



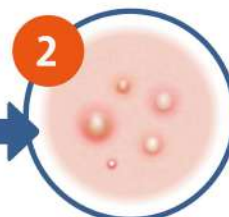
If you experience any symptoms, wear a mask and seek medical attention immediately. Inform your doctor about your travel history, history of exposure at high-risk premises venues, and contact history.

### + Symptoms of Mpox :

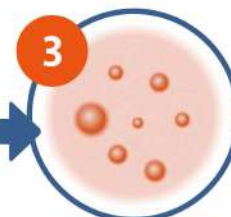
Include the appearance of various skin lesions such as rashes, blisters, and pustules on the face, limbs, and anogenital region.



Rashes

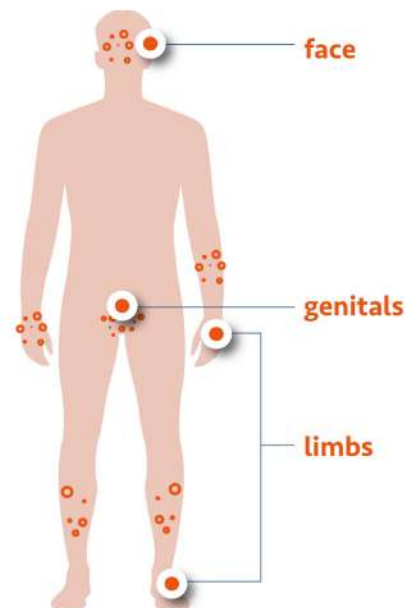


Blisters



Pustules

### + Symptom onset site :



### + Other possible symptoms :



fever



chills / shivering



swollen lymph nodes  
(near the ear, axilla, neck,  
or groin.)



headache

※ Mpox vaccination is also one of the prevention methods for eligible people. Please search for the Mpox vaccine area (Please scan the QR-code below) ※



衛生福利部疾病管制署  
TAIWAN CDC



Mpox vaccine area



www.cdc.gov.tw



1922 Prevention Master  
www.facebook.com/TWCDC



Taiwan CDC  
LINE@

# MPOX

## What you need to know

### An outbreak of Mpox is occurring in many countries

- Taiwan Centers for Disease Control (TCDC) has declared Mpox as Category II of Notifiable Infectious Disease since June 23 2022.
- Mpox is preventable. The incubation period of Mpox is 3-21 days. Most people recover fully in about 2-4 weeks, but some people (for example, pregnant women, young children, elderly people, severely immunocompromised people, etc.), can get seriously ill.
- People with Mpox might experience **serious discomfort or pain**.
- Anyone can get Mpox. The transmission of Mpox includes person-to-person (close contact or respiratory droplets) and animal-to-human. **The most common route for transmission of Mpox during this current outbreak is person-to-person and close contact.** Adding to that, most cases are male.

### Symptoms of Mpox often include

- Different types of skin lesions on the face, extremities, and genitals
- Fever, Headache, Mental distress
- Swollen lymph nodes (neck, armpits, groin, etc.)
- Muscle and back pain
- Pain and swelling of the rectum
- Pain or difficulty when urinating.



### Transmission routes for Mpox include:

- **Person-to-person:**
  - Close contact with the patient's skin lesions
  - Intimate sexual contact with a patient, including: oral, anal, or vaginal sex
  - Contact with the patient's genitals (penis, testicles, labia and vagina) or anus
  - Hugging, massaging, or kissing the patient
  - Contact with a patient's respiratory secretions, damaged skin, mucosa, or contaminated objects (including personal belongings such as clothing, bedding, or towel)
  - Respiratory droplet transmission: from prolonged face-to-face contact
  - Mother-to-child transmission: the virus might be transmitted to the fetus directly through the placenta, or through contact during delivery
- **Animal-to-human :**  
direct contact with the blood, body fluids, damaged skin, or mucosa of infected animals or having infected animals

### How to protect yourself from Mpox

- If you are eligible for a Mpox vaccination, **please get vaccinated**
- **Avoid intimate behaviors with multiple or strangers.**
- **Be aware of your own health condition** at all times, check for any symptoms that look like Mpox
- If Mpox-like symptoms occur, wear a mask and seek medical assistance as soon as possible. Inform the healthcare provider of your Mpox contact history or history of exposure at high-risk premises venues.
- **Practice good hand hygiene** (wash your hands regularly, avoid touching your eyes, nose, and mouth)
- If a member of the household has Mpox, **clean and disinfect the household environment well.**
- If you travel to endemic areas, avoid contact with wild animals and eating meat that is not thoroughly cooked



### Mpox vaccine

- The vaccine is produced with live, attenuated orthopoxvirus, Modified Vaccinia Ankara (MVA). Due to the fact that the virus does not replicate in mammal cells, it can be considered as an inactivated vaccine, and is a **relatively safe vaccine**.
- The recommended targets for vaccination:
  - 1 High risk contacts who have sexual partners diagnosed with Mpox
  - 2 Work with orthopoxviruses in a laboratory
  - 3 Individuals who have engaged in risky sexual behavior in the past year (such as people with multiple sexual partners, who are sex workers, and those who have engaged sex at commercial venues, etc.); those who have had sexually transmitted diseases ; or Individuals who have a sexual partner with any of the above risks.
  - 4 Healthcare providers or cleaning personnel caring for Mpox cases, personnel performing diagnostic tests and vaccinations.
- The effectiveness of the Mpox vaccine reaches 40% to 80% protection in **14 days** after the vaccination. Therefore, it is suggested that people who received vaccination shall avoid high-risk behaviors within **14 days** after getting vaccinated.
- The second dose should be given at least more than 4 weeks after the first dose. After the second dose, the effectiveness of the vaccine will reach approximately 90%.
- Pain, redness, and swelling where the shot was given and whole-body muscle soreness are the most common side effects of an Mpox vaccination.



Anyone can get or spread Mpox, and our common enemy is the virus.  
If we work together on prevention, we can stop the epidemic together.



衛生福利部疾病管制署  
TAIWAN CDC



www.cdc.gov.tw



1922防疫達人  
www.facebook.com/TWCDC

疫情通報及諮詢專線：1922

Refer to "Mpox: what you need to know" by WHO